



سيفتي فيرست
لأنظمة الحرائق ش.ذ.م.م
SAFETY FIRST SAFETY SYSTEMS LLC

Specialist in Supply & Installation and Maintenance of Fire Alarm, Fire Fighting and Fire Protection Systems

متخصصون في توريد وتركيب وصيانة أعمال إنذار الحريق وجميع أنواع الحماية من الحرائق

Table of Contents



- i. About The Company**
- ii. Engineering Profile**
- iii. Contact Person**
- iv. Company Structure**
- v. Scope of Supply**
- vi. Products Range**
- vii. Projects & Maintenance References**
- viii. Clients**
- ix. Company Certificates**

MISSION

To give customer the best service when it comes to the installation and maintenance for Fire Protection and Detection System.



VISION

We are the LEADER in our FIELD.

GOAL

To achieve the satisfaction of the customer to the service we provided when it comes to fire safety.

About The Company

- ❖ Established in Dubai, 2012.
- ❖ Provides Fire Protection and Detection Systems, Installation and Maintenance, and Security Solutions.
- ❖ Approved by Civil Defense of Dubai.
- ❖ Based on the quality and technical standards of USA (NFPA) and UK (BS).

Engineering Profile

- ❖ Qualified engineers and well equipped engineering department.
- ❖ Prestigious projects attributed both from Government and Private Sectors throughout UAE.
- ❖ Project execution is supervised by well qualified engineers in the Fire Protection field.

Contact Person

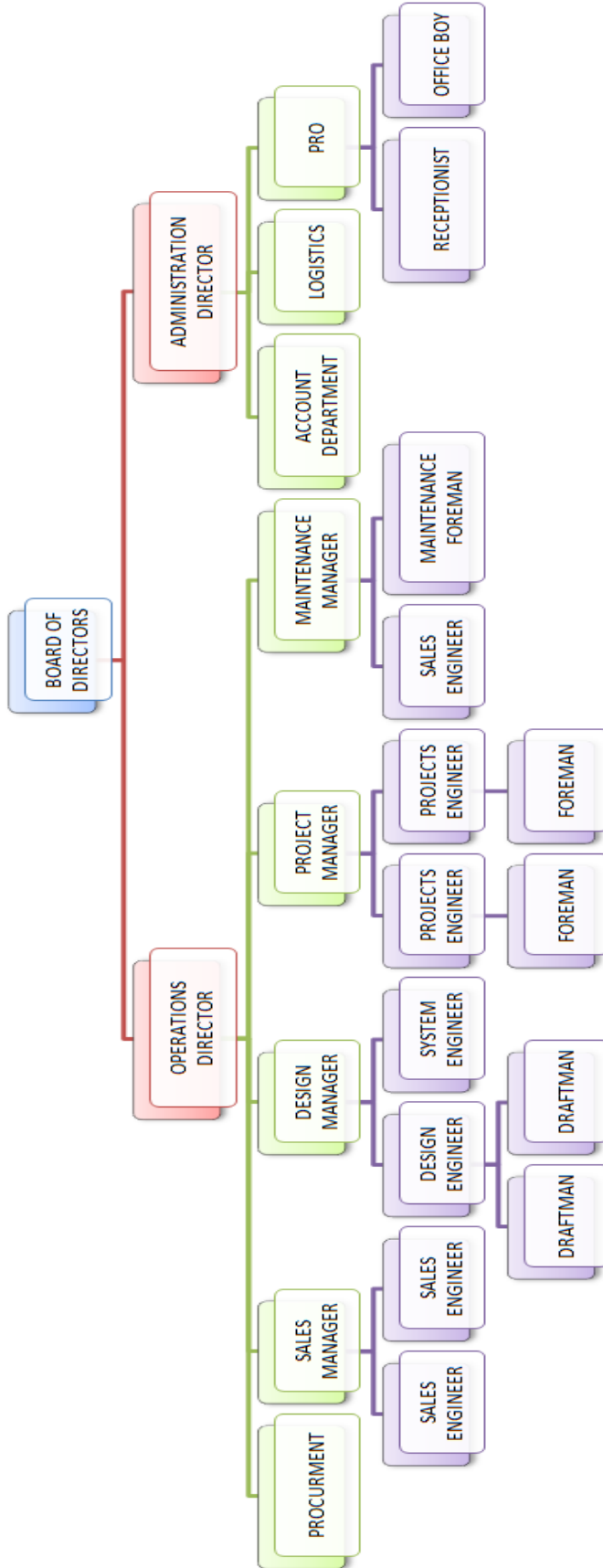
Mr. Nader Mohamed Zakaria

Manager

E-mail id: eng.nader@safetyfirst-uae.com

Phone: 050 174 6621

COMPANY STRUCTURE





SCOPE OF WORK

FIRE DETECTION SYSTEM

- A system of fixed apparatus in which fire detectors, control equipment and indicating equipment are employed for automatically detecting fire and initiating other action as arranged.

➤ *Fire Alarm System*

A fire alarm is a unit made of several devices, using visual and audio signalization to warn people about a possible outbreak of fire or carbon monoxide occurrence in the area of coverage.

Addressable System

An addressable fire alarm system is made up of a series of fire detectors and devices that are connected back to a central control panel. They are ideal for large facilities as each device has an address/location that quickly pinpoint the location of a fire.

Conventional System

A conventional fire alarm system identifies the activated detector or manual call point by a zone LED. They work by dividing the building into a number of detection zones. They are inexpensive and are designed for smaller facilities.



➤ **Voice Evacuation/ Public Addressing System**



Voice evacuation systems are specially designed public address systems, typically used during fire situations. They are usually part of high end fire alarm systems, primarily in places of assembly. The system uses spoken messages to evacuate public facilities in an orderly fashion during emergencies.

Paging System

A public address system used to make announcements and notify people during outbreak of fire emergencies.



Amplifier

Electronic devices that increase the amplitude of a signal.



Evacuation Accessories



Fireman Telephone System

A two wire system connecting the firefighter's phone jacks to the command center. It is a stand-alone, old telephone system with no bell ringing. It provides secure and reliable communications for firefighters.



➤ **Emergency Light & Exit Light System**



Emergency lighting is lighting for an emergency situation that automatically comes on when the main power supply to the normal provision fails. It is normally required to operate fully automatically and give illumination of a sufficiently high level to enable all occupants to evacuate the premises safely.

Manual/ Normal Type

A battery-backed lighting device that switches on when a building experiences a power outage.

Central Battery System

Emergency lighting central battery system is an essential in all public buildings and workspaces that switches over to battery power. It is less disruptive and requires periodical maintenance to ensure reliable operation.



Monitoring System

Large buildings contain many emergency lights and illuminated exit signs. These lights are connected to a central computer station to individually report their functional status and monitor their maintenance tasks. They are more efficient and cost-effective.





FIRE PROTECTION SYSTEM



- A design features, systems or equipment in a building, structure or other fire risk, to reduce danger to persons and property by detecting, extinguishing or containing fires.

- The regular interaction of dependent and independent sources of fire protection services, including both public and private organizations, apparatus, equipment, methods, human resources and policies by the authority having jurisdiction.

➤ *Fire Pump*

Fire pumps are part of a fire protection system's water supply. It takes water from a water supply and increases the pressure of the water. They may be powered either by an electric motor or a diesel engine. The unit can be set to either automatic or manual mode. When in auto mode, the electric pump will be switched on automatically if the line pressure drops below a preset level. In case of power failure, the control panel automatically starts the diesel pump. In manual mode, the electric pump has to be switched off manually.

The fire pump starts when the pressure in the fire sprinkler system or fire hose reel system drops below a threshold. The sprinkler system pressure drops significantly when one or more sprinklers are exposed to heat above their design temperature, and opens, releasing water. Alternatively, other fire hose reels or connections are opened, causing a pressure drop in the main.

Fire pumps are needed when the local municipal water system cannot provide sufficient pressure to meet the hydraulic design requirements of the fire sprinkler system. This usually occurs if the building is very high. Fire pumps are also needed if the fire protection water supply is provided from a ground level water storage tank.



Horizontal Split Case

A type of centrifugal pump, in which the case is split into two separate chambers with the casing, the suction nozzle, and the discharge nozzle are included in a single chamber. The casing is split along a horizontal plane in relation to the impeller. This type is more economical for high flow applications.



Horizontal End Suction

A basic type of centrifugal pump typically designed with a casing. The suction is present on one end and the discharge is placed at the top. Close Coupled and Frame Mounted are two types of end suction pumps.

Vertical Turbine Pumps

Centrifugal pumps specially designed to move water from an underground reservoir. Also referred to as deep well or line shaft turbine pumps. The electric motor is located above ground connected via a long vertical shaft to impellers at the bottom of the pump. Used as an alternative for submersible pump.

Vertical Inline Pumps

Single stage centrifugal pumps specifically designed for vertical installation. It consists of a vertically oriented shaft with the suction and discharge connections in the casing in line with each other.



➤ **Fire Hydrant**



Fire hydrant systems are designed to increase the fire fighting capacity by boosting the pressure through connection points by which firefighters tap into a water supply. The water is discharged into the fire engine form which is then pumped over fire. In a building, a fire hydrant system is a safety measure or emergency equipment required in some buildings that comprises a series of components that when assembled together provide a source of water to assist fire authorities in a fire.

Dry Fire Hydrant

A dry fire hydrant is a non-pressurized pipe system permanently installed in existing local water sources like lakes, ponds and streams that provides a suction supply of water to a fire department tank truck. Installed in communities without residential fire hydrants or water mains. The shut-off valve is located underground.



Wet Fire Hydrant

This hydrant is equipped with outlet valves with pressurized water at every outlet constantly and are operated independently. Used where no possibility of water freezing occurs due to weather conditions. The shut-off valves are above ground.



➤ **Breeching Inlet**

Breeching inlets are installed both inside and outside of the buildings to access water for firefighting purposes. Normally dry, but capable of being charged with water by pumping from fire service appliances. They are commonly known as Fire Department Connection.

Two Way Breeching Inlet

The 2-way or two way breeching inlet has 2x2.5" instantaneous male non return valve inlets and a 4" outlet.



Four Way Breeching Inlet

The 4-way or four way breeching inlet has 4x2.5" instantaneous male non return valve inlets and a 6" outlet along with 1" drain valve.



➤ Fire Hose Reel Cabinet



Fire hose reel cabinets are compact cabinets designed to safely accommodate and protect fire hose reels and rack units. Some models have the ability to hold a 2.5" valve or extinguisher or both. They are painted with powder coated for elegant finish and protection from rust.

Recessed Type

Also known as Wall Mounting cabinet, these fire hose reel cabinets are ADA compliant.



Surface Type

Surface type are fire hose reel cabinets mounted directly on the wall. These are not usually ADA compliant, but work great in buildings that don't require ADA accessibility as they are much easier to install.

Fire Valves



Fire Hoses



Coupling and Nozzles



➤ Sprinkler System



An active fire protection measure which consists of a water supply system, providing adequate pressure and flow rate to a water distribution piping system, onto which fire sprinklers are connected.

Wet Sprinkler

A wet pipe sprinkler system is a sprinkler system employing automatic sprinkler heads attached to a piping system containing water and connected to a water supply so that water discharges immediately from sprinklers opened by heat from a fire.



Upright Sprinkler

An upright sprinkler stands atop the pipeline. The water stream is directed upward against the deflector. It comes with a water deflector at top. They are used mostly in warehouses, large buildings.



Pendant Sprinkler

Pendant type hangs from the pipeline. The water stream is directed downward against the deflector and it is placed at bottom. It is used mostly in office or home buildings.



Recessed Sprinkler

Sprinkler in which all or part of the thermally sensitive element is above the plane of the ceiling.



Concealed Sprinkler

A recessed sprinkler with a cover plate installed in walls or ceilings.

Sidewall Sprinkler

A sprinkler providing a one-sided water distribution outward from a wall in a pattern resembling one quarter of a sphere. A small portion of the discharge is directed at the wall behind the sprinkler.



Dry Sprinkler

A sprinkler system employing automatic sprinklers that are attached to a piping system containing air or nitrogen under pressure, the release of which permits the water pressure to open a valve known as a dry pipe valve, and the water then flows into the piping system and out the opened sprinklers.



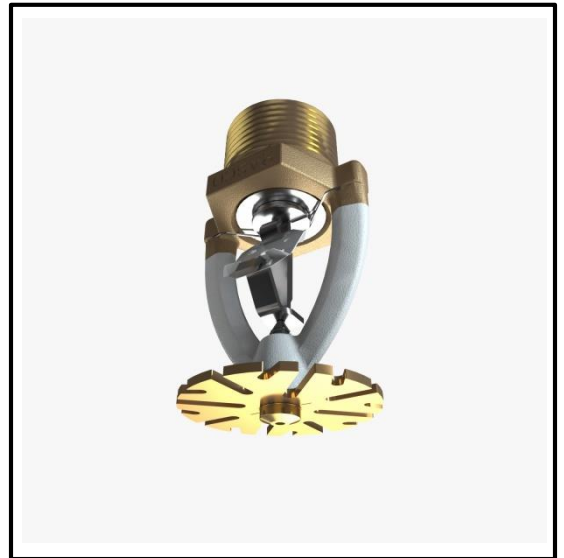


➤ *In-Rack Sprinkler System*

With taller storage buildings and a greater recognition of high hazard commodities, a new generation of in-rack sprinkler systems have been developed. In-rack Sprinkler System to substantially reduce the number of in-rack sprinklers required while maintaining a low water demand. In-rack sprinkler systems using min. K8.0 quick-response sprinklers with horizontal barriers or ESFR sprinklers as in-rack sprinklers are also available.

Early Suppression Fast Response (ESFR) Systems

Early Suppression Fast Response (ESFR) systems are quick responding, high volume sprinkler systems that provide exception protection for high piled storage occupancies. Instead of merely controlling a fire until the original fuel source is depleted, ESFR systems are designed to suppress the fire by discharging a large volume of water directly to the fire to reduce the heat release rate.



These systems, installed at the ceiling, use large volumes of water delivering large water droplets at a high velocity to knock down the fire plume and provide enhanced protection for High Piled Storage Occupancies.



➤ *Fire Suppression System*

Fire suppression systems extinguish and prevent the spread of fire in a building. They use a combination of dry chemicals and/or wet agents to suppress equipment fires.

Clean Agent FM200 Systems

It is an effective total flooding agent. FM200 is the best Halon 1301 replacement agent. It has Zero Ozone Depletion Potential and is suitable for use on surface burning fires, flammable liquid fires & fires on electrical equipments.



Foam Equipments & Concentrates

Foam equipments and concentrates are highly efficient extinguishing agent consisting of water, foaming agent and air. Its properties are cooling, suffocating, separating covering, restraining and displacing. Foam equipments includes foam proportioners, portable foam equipment and mobile foam products.

Used for Class A & Class B fires.





Kitchen Hood System/ Wet Chemical Fire Suppression System

It is a pre-engineered, fixed automatic fire suppression system specifically developed for protection of commercial and institutional restaurant cooking appliances, exhaust hoods and ducts. The suppressant is a liquid substance that cools the flames immediately. They are complied with NFPA 17A & NFPA 96.



Pre-Action System

Pre-action sprinkler system employs the basic concept of a dry pipe system. Water is held from piping by an electrically operated valve called pre-action valve. The most common application is in freezer warehouses, lift machines.

Deluge Valve System

It is a system control valve in a deluge system used for application of water in a spray system. It protect areas such as power transformer installation, storage tank, conveyor protection and other industrial application etc..



Deluge Valve System is a hydraulically operated diaphragm valve and has three chambers. They are basically for the transformers, diesel tanks, LPG tanks, power plants.

➤ Fire Extinguisher



A portable device for extinguishing fires, usually consisting of a canister with a directional nozzle used to direct a spray of water, chemically generated foam, inert gas or fine powder onto the fire.

Dry Powder

Dry powder extinguishers extinguish the fire by separating the fuel from the oxygen element or by removing the heat element of the fire triangle. They are for combustible metal fires only.

Carbon Dioxide (CO₂)

CO₂ has a high ratio of expansion and extinguishes fire by reducing oxygen content. It typically store the agent in High Pressure cylinders & Low Pressure cylinders.

Automatic Fe-36

Fe-36 is a non-corrosive extinguishing clean agent which is free of residue, electrically non-conductive and has zero ODP. It is highly suited for use in portable fire extinguishers for high value applications.

Automatic Dry Powder Extinguisher

Automatic dry powder are ideal for use in unmanned or confined locations. Featuring a specially designed heat sensitive glass bulb which bursts when the temperature rises to 68°C.

Wet Chemical Extinguisher

Wet chemical fire extinguishers are the ones recommended for use with cooking oil fires and are essential safety kit for professional kitchens. It can be used for fires involving cooking oils and fats, flammable solids and also in flammable liquid fires. They are used in restaurants, burger bars and hotel kitchens.





PROJECTS & MAINTENANCE REFERENCES



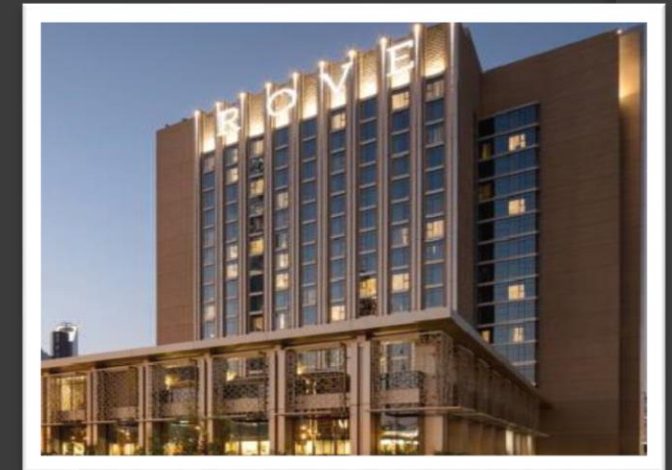
ANWA TOWER



DT-1 ELLINGTON RESIDENTIAL TOWER



JUMEIRAH BEACH HOTEL
[Additional Work]



ROVE HOTEL JAFILIYA



TAMMY VILLA, EMIRATES HILLS



NAD AL SHEBA VILLA



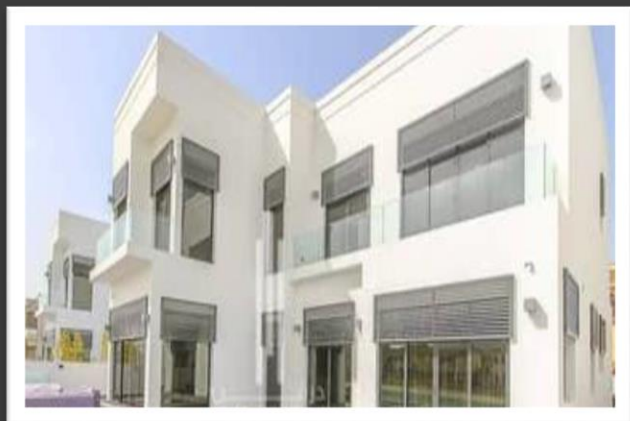
PROJECTS & MAINTENANCE REFERENCES



RAFFLES SCHOOL



BOULEVARD TOWER



VILLA @ PALM JUMEIRAH



**AL BAIT AL SHAMI
RESTAURANT & CAFÉ JUMEIRAH**



ORIENTAL HOUSE BUR DUBAI



G+3B+9 FLOORS @ QUSAIS



CLIENTS

- 1) Al Waleed Real Estate
- 2) Bin Hendi
- 3) Pronto Middle East Facility Management L.L.C..
- 4) Jasaf Electromechanical Co. L.L.C.
- 5) Leader Real Estate
- 6) Lamirada Contracting L.L.C.
- 7) BIC Contracting L.L.C.
- 8) Bower Wick Furniture Manufacturing L.L.C.
- 9) Al Rostamani Group
- 10) Alpha Properties L.L.C.
- 11) Al Hind Real Estate L.L.C
- 12) Al Fardan Real Estate
- 13) Park Regis Boutique Hotel
- 14) Al Habtoor Leighton Interiors L.L.C.
- 15) Fawaz Al Khateeb Trading Co. L.L.C
- 16) Al Bait Al Shami Restaurant & Café
- 17) Sacoor Brothers
- 18) Just Play Sports Academy L.L.C.
- 19) VFS Global
- 20) James L Williams Middle East
- 21) Papa Murphy's Pizza
- 22) Kinnarps Project Solutions L.L.C.
- 23) El Hebri Contracting L.L.C.
- 24) Marble Art L.L.C.
- 25) Bright Choice Trading L.L.C.
- 26) Arabian Jerusalem Company
- 27) Equitrans Logistics L.L.C.
- 28) Al Malik Building Contracting Company L.L.C.
- 29) The Dental Studio
- 30) Star Elevator Systems & Metal Technology L.L.C.
- 31) British Dental Clinic
- 32) Kangaroo Kids Nursery
- 33) Eat Greek Restaurant L.L.C.
- 34) 515 MedSpa Center
- 35) Al Ahli Driving Center
- 36) Carawan Electrical & Mechanical Works
- 37) NVC Interior Decoration
- 38) Al Safa Contracting L.L.C.

PROJECT DETAILS

18

<u>Project</u>	<u>Client</u>	<u>Consultant</u>	<u>Main Contractor</u>	<u>Plot No.</u>	<u>Location</u>
Anwa Tower (G+4P+44)	Omnayat	Naga Architrcts,Designers & Planners	Reem capital contracting LLC	8886121	Dubai Maritime
DT-1 (G+2P+14)	Ellington Properties Development LLC	Lacasa Architects& Engineering consultants	Target Engineering Construction Company	445 (345-809)	Business Bay
Jumeirah Beach hotel Refurbishment 2018	Jumeirah Group	AK Design	Ignite Limited Contracting	367-126	Jumeirah
Décor Works on JBR 6, Unit Nos. GM-07,08	Al Baith AL Shami Restaurant & Café	EXL Extreme Line Engineering Consultancy	Al Raseef Contracting L.L.C.	392-539	Jumeirah
B+G+1F+Roof Residential Villa	Latifa Musabbeh Rashed Al Fattan Falasi	Golden Square Engineering Consultants	Lamirada Contracting LLC	615-332	Nad Al Shiba
Avishesha Chandulal Bhojani & Mrs. Poonam Bhojani	Avishesha Chandulal Bhojani & Mrs. Poonam Bhojani	Architectural Corner	Jasaf Electro Mechanical Co. L.L.C.	PJJPFJ35	Palm Jumeirah
Private Villa – Emirates Hills B+G+1	Mrs. Tammy Makhoul	Omar Moujaes - Architect	Jasaf Electro Mechanical Co. L.L.C.	394-542	Emirates Hill Third
B+ G+ 12+ R	Khalifa Al Fahad Contracting Co. L.L.C.	Jelfar Star electro Mechanical Works	Khalifa Al Fahad Contracting Co. L.L.C.	534-056	Tecom
B+G+10+R	Al Sahel Building Contracting L.L.C.	Anwar Al Aqsa Electrical and Sanitary Works	Al Sahl Building Contracting L.L.C.	AFC 017B	Al Furjan, Dubai
B+G+Service Mezz+10+Service Floor+ Roof	Rove Hotels	Arch Group	Shapoorji Pallanji Mideast LLC	3236677	Al Jafiliah
B+G+14+R	Al Qabdah Contracting	Jelfar Star electro Mechanical Works	Al Qabdah Contracting	410-184	Business Bay
B+G+14+R	Khalifa Al Fahad Contracting Co. L.L.C.	Jelfar Star electro Mechanical Works	Khalifa Al Fahad Contracting Co. L.L.C.	342-132	Tecom
G+3BD+9 Floors	Sahalen Saeed	Proline Consultants	JSCom Contracting L.L.C.	2470391	Al Qusais
Precast Factory 143	Dubai Industrial City	Renaissance Engineering Consultans	Al Abraj Contracting Company	5981191	DIP
Villa	Al Naboodah	ADS	Al Naboodah	2710288	Kawaneej
Ground+Mezzanine	Abdulla Ahmed Mohamed Bin Fahad	Inline Image Engineering Consultants	Jasaf Electro Mechanical Co. L.L.C.	364-0456	Al Qouz
B+G+2 Labor Accomodation	Bu Haleeba Contracting	Abdul Rahim Architectural Consultants	Bu Haleeba Contracting	3690194	Al Qouz
Labor Camp	Al Safa Contracting	Al Baheth	Al Safa Contracting	121-456	Al Qusais
Ware Houses	Al Ahli Driving Center	Rokn	Al Ahli Contracting	242-149	Al Qusais
Station	Habtoor Leighton Interiors Jabel Ali Hills	Next	Habtoor Leighton Interiors Jabel Ali Hills	358-197	Dubai
Class Rooms	Raffles World Academy	Bureau Consultants	Jasaf Electro Mechanical Co. L.L.C.	366-484	Jumeirah

COMPANY CERTIFICATES



اقتصادية دبي
DUBAI ECONOMY



رخصة تجارية Commercial License

تفاصيل الرخصة / License Details

License No.	672894	رقم الرخصة
Company Name	SAFETY FIRST SAFETY SYSTEMS L.L.C	اسم الشركة
Trade Name	SAFETY FIRST SAFETY SYSTEMS L.L.C	الإسم التجاري
Legal Type	Limited Liability Company(LLC)	الشكل القانوني
Expiry Date	25/06/2020 تاريخ الإنتهاء	تاريخ الإصدار
D&B D-U-N-S® No	0 الرقم العالمي	رقم الرخصة الام
Register No.	1098056 رقم السجل التجاري	عضوية الغرفة
Issue Date	27/06/2012	ذات مسئولية محدودة
Main License No.	672894	
DCCI No.	206980	

الاطراف / License Members

Share / الحصص	Role / الصفة	Nationality / الجنسية	Name / الإسم	No./ الشخص
	Manager / مدير	Egypt / مصر	نادر محمد زكريا احمد مصطفى NADER MOHAMED ZAKARIA AHMED MOUSTAFA	432796

نشاط الرخصة التجارية / License Activities

Fire Fighting Safety Equipment Installation

تركيب معدات السلامة واطفاء الحريق

العنوان / Address

Phone No	971-4-3791360	تليفون	P.O. Box	282942	صندوق بريد
Fax No	971-4-3883430	فاكس	Parcel ID	365-300	رقم القطعة
Mobile No	971-50-1746621	هاتف متحرك			مستودع 40 ملك مؤسسة دبي العقارية بواسطة حسن عبدالله البحري - القوز الصناعية

الملاحظات / Remarks

تم اضافة الشركاء والمدير في 15/10/2012
تم اضافة وانسحاب شريك بتاريخ 22/5/2014
تم انسحاب شركاء في 6/3/2016
يمنع مواولة نشاط الشركة الخاص بالدفاع المدني قبل أخذ موافقة الادارة العامة للدفاع المدني - دبي
The Company Shall not Carry on The DCD activities unless approved by Dubai Civil Defence

Print Date 01/08/2019 15:40 تاريخ الطباعة Receipt No. 13273727 رقم الإيصال

يمكنك الآن تجديد رخصتك التجارية من خلال الرسائل النصية القصيرة، أرسل رقم الرخصة إلى 6969 (دو/اتصالات) للحصول على اذن الدفع.

Now you can renew your trade license by sending a text message (SMS). Send your trade license number to 6969 (Du/ Etisalat) to receive payment

وثيقة إلكترونية معتمدة وصادرة بدون توقيع من دائرة التنمية الاقتصادية. لمر ارجعة صحة البيانات الواردة في الرخصة برجاء زيارة الموقع www.dubaied.gov.ae

Approved electronic document issued without signature by the Department of Economic Development. To verify the license kindly visit www.dubaied.gov.ae

إدارة السلامة الوقائية - قسم اعتماد وترخيص الشركات



دولة الإمارات العربية المتحدة
وزارة الداخلية
الإدارة العامة للدفاع المدني - دبي
United Arab Emirates
Ministry of Interior
DCD General Directorate

Tel.: 009714 2611111
Fax : 009714 2612449
P.O. Box 11377 Dubai
United Arab Emirates

للتوارئ
Emergency

997

www.dcd.gov.ae

ترخيص تركيب وصيانة - الفئة الاولى A (أنظمة حماية و أنظمة مكافحة)

A 90
2019
(1-1)

رقم الترخيص:
سنة الترخيص:
عدد التراخيص:

تم إصدار الترخيص استناداً إلى القرار الوزاري رقم (213) لسنة 2017 ، في شأن تنظيم خدمات الدفاع المدني

رقم الترخيص	1098056	رقم السجل	672894	رقم الرخصة	سيفني فبرست لانتظمة الحرائق ش.ذ.م.م	اسم المنشأة
البلد	الإمارات	الجنسية	مصر	الجنسية	أحمد عبدالله علي الأميري	اسم صاحب الترخيص
رقم الهاتف	282942	رقم الفاكس	04-3883430	رقم الفاكس	04-3791360	أطراف الرخصة
عنوان الشركة	مستودع 40 ملك مؤسسة دبي العقارية بواسطة حسن عبدالله البحري - القوز الصناعية			تاريخ انتهاء الرخصة	2019/06/26	الموقع الإلكتروني
تأسست بتاريخ	2012/06/27 م	تاريخ الإصدار	2019/03/18 م	تاريخ الانتهاء	2020/02/16 م	عدد أنظمة المعتمدة
عدد المهندسين	6	عدد الفنيين	24	عدد الفنيين	2	



يعتمد عن/ مدير الإدارة العامة للدفاع المدني/دبي

أن تكون دولة الإمارات العربية المتحدة من أفضل دول العالم في تحقيق الأمن والسلامة

إدارة السلامة الوقائية - قسم اعتماد وترخيص الشركات



دولة الإمارات العربية المتحدة
وزارة الداخلية
الإدارة العامة للدفاع المدني - دبي
United Arab Emirates
Ministry of Interior
DCD General Directorate

Tel.: 009714 2611111
Fax : 009714 2612449
P.O. Box 11377 Dubai
United Arab Emirates

للتوارئ
Emergency

997

www.dcd.gov.ae

اسم المنشأة: سيفني فبرست لانتظمة الحرائق ش.ذ.م.م

قبة المشاريع المنقذة: *حجم المشاريع : عدد غير محدد من الطوابق غير محدد المساحة

A90
2019
(1-1)

رقم الترخيص:
سنة الترخيص:
عدد التراخيص:

كشف المعدات والأجهزة والمواد المعتمدة المراد تركيبها وصيانتها

م	تركيب وصيانة أنظمة الحماية	م	تركيب وصيانة أنظمة مكافحة
1	أجهزة الإنذار (لوحة تحكم/كواشف/كاسر زجاج/ نظام الإخلاء الصوتي)	1	طفايات حريق يدوية/مضخات حريق/الصواعد/ مرشات/خراطيم الحريق/إثوقات الحريق/إصمامات.
2	إنارة الطوارئ / إنارة المخارج	2	أنظمة الإطفاء التلقائية

إدارة السلامة الوقائية - قسم اعتماد وترخيص الشركات
ملاحظة:
1- يجب أن تكون دولة الإمارات العربية المتحدة من أفضل دول العالم في تحقيق الأمن والسلامة
2- يجب أن تكون دولة الإمارات العربية المتحدة من أفضل دول العالم في تحقيق الأمن والسلامة
3- يجب أن تكون دولة الإمارات العربية المتحدة من أفضل دول العالم في تحقيق الأمن والسلامة



يعتمد عن/ مدير الإدارة العامة للدفاع المدني/دبي



CERTIFICATE

OF

REGISTRATION

This is to certify that the management system of

Safety First Safety Systems L.L.C.

P.O. Box: 282942, Al Quoz Industrial Area 2, Dubai, United Arab Emirates.

has been assessed and registered by
Veritas Assurance International as conforming to the requirements of

ISO 9001:2015 Quality Management System

The Quality Management System is applicable to

**Installation & Maintenance of Fire Alarm Systems, Fire Fighting
Equipments and Emergency Equipment Systems.**

Certificate No : 32118425

Certificate issue date : 12-03-2019 | Certificate expiry date : 11-03-2022

1st Surveillance due before : 11-03-2020 | 2nd Surveillance due before : 11-03-2021

Authorised Signatory
Veritas Assurance International



Full Member of IAF



Veritas Assurance International is Accredited by UAF (United Accreditation Foundation)
Full Member of IAF (International Accreditation Forum)

Registered Accreditation Office:
3510, Colmar, Norfolk, VA 23509, United States of America (USA).

This certificate remains valid while the holder maintains the management system in accordance with the standard(s) above, which will be periodically audited by Veritas Assurance International.

This certificate remains the property of Veritas Assurance International and must be returned on request. In the issuance of this certificate, Veritas Assurance International assumes no liability to any party other than to the client, and then only in accordance with the agreed upon certification agreement. Validity of this certificate may be confirmed at www.veritasassurance.com, directly through QR code by using any device with correct information or email to admin@veritasassurance.com.

This certificate is valid only for the information above.



VERITAS ASSURANCE INTERNATIONAL * * * * *

www.veritasassurance.com



United Arab Emirates
Ministry of Interior
Civil Defense G.H.Q.
General Directorate of Civil Defence Dubai



دولة الإمارات العربية المتحدة
وزارة الداخلية
القيادة العامة للدفاع المدني
الإدارة العامة للصّاع المدني / دبي

الرقم: 2019-138888-LCA00001

"شهادة استيفاء شروط السلامة الوقائية"

صدرت هذه الشهادة استناداً الى قرار مجلس الوزراء رقم (24) لسنة 2012م في شأن تنظيم خدمات الدفاع المدني بالدولة:

الإسم التجاري للمنشأة: سينتي فيرست لازمة الحرائق ش.ذ.م.م رقم الرخصة: 672894 رقم الأرض: 3650300
الكائن بمنطقة: تاريخ الإصدار: 2019/04/07 تاريخ الانتهاء: 2020/04/06
وقد وجد مستوفى لشروط السلامة الوقائية.

- ملاحظات:
- سندات الرسوم بايصال رقم. ()
 - يجب الالتزام باعتماد عقود الصيانة الدورية لأجهزة ومعدات السلامة و الوقاية من الحريق من إحدى الشركات المعتمدة.
 - أي تعديلات في أنظمة ومعدات السلامة و الوقاية من الحريق أو التقاط يتطلب موافقة مسبقة من الدفاع المدني.
 - يجب ربط المنشأة بالأنظمة الذكية (24x7).
 - (في حال الإخلال بأي من اشتراطات السلامة الوقائية سيتم مخالفة المنشأة (نموذج المخالفات خلف الشهادة -
 - توضيح الشهادة في مكان بارز وواضح للعيان.
 - مراجعة الدفاع المدني سنوياً للكشف على المنشأة.

هذه الشهادة معتمدة إلكترونياً ولا تحتاج الى توقيع

للطوارئ
997
Emergency

740



للتأكد من صحة بيانات الشهادة / <http://eservices.dcd.gov.ae/>

الموقع الإلكتروني: www.dcd.gov.ae
نظام المقترحات: <http://esuggest.dubai.ae>

هاتف: 800997
فاكس: 04-7052150
www.ecomplain.ae

رؤيتنا: أن تكون دولة الإمارات العربية المتحدة من أفضل دول العالم أمناً وسلامة.

شهادة تسجيل العضوية Membership Certificate

License no.	672894	رقم الرخصة	672894
Membership no.	206980	رقم العضوية	206980
Registration no.	1098056	رقم السجل التجاري	1098056
Trade Name	SAFETY FIRST SAFETY SYSTEMS L.L.C	الاسم التجاري	سيقتي فيرست لانظمة الحرائق ش.ذ.م.م
Legal Status	Limited Liability Company(LLC)	الشكل القانوني	ذات مسؤولية محدودة
Activity	Fire Fighting Safety Equipment Installation	نوع النشاط	تركيب معدات السلامة واطفاء الحريق
Member Since	27/06/2012	تاريخ الإنساب	27/06/2012
Date of Issue	27/06/2012	تاريخ الإصدار	27/06/2012
Expiry Date	25/06/2020	تاريخ الإنتهاء	25/06/2020

Remarks

This certificate shall be invalid incase of any alteration without chamber's authorization

For online verification of this Certificate, please visit our website
<http://www.dubaichamber.ae/verify>

غرفة تجارة وصناعة دبي
Dubai Chamber of Commerce & Industry

P.O. Box 1457 - Dubai, U.A.E. | Tel (Within UAE) 800 CHAMBER (800 2426237) | Tel (Outside UAE) (+971) 4 2280000 هاتف
فاكس (+971) 4 2211646 | customercare@dubaichamber.ae | www.dubaichamber.ae

الملاحظات

تعتبر هذه الشهادة لاغية في حال أي كسشط أو تعديل عليها دون اعتماد ذلك من الغرفة

للتأكد من صحة بيانات الشهادة يرجى الرجوع إلى موقع الغرفة
<http://www.dubaichamber.ae/verify>



سيفتي فيرست لأنظمة الحرائق ش.ذ.م.م
SAFETY FIRST SAFETY SYSTEMS LLC

هاتف: ٣٧٩١٣٦٠ ٤ +٩٧١، فاكس: ٣٨٨٣٤٣٠ ٤ +٩٧١ متحرك: ١٧٤٦٦٢١ ٥٠.
Tel: +971 4 3791360, Fax: +971 4 3883430, Mob: 050 1746621
P.O. Box: 282942, Dubai - U.A.E , Email: safetyf4@gmail.com

